

PROJECT HIGHLIGHT – EQUIPMENT THERMAL IMAGING

PROJECT

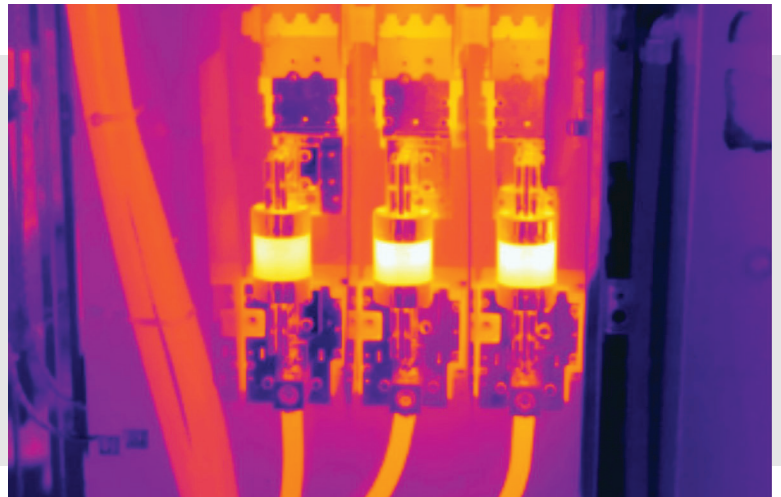
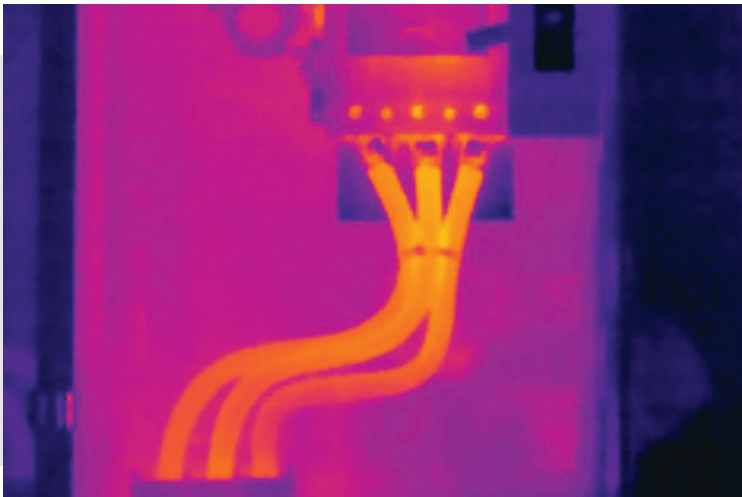
Non-contact thermal imaging scans to assess the health of major electrical equipment and systems.

SCOPE OF WORK

Identify temperature gradient differences indicative of poor connections or other electrical equipment issues.

OVERVIEW

QED was on a client site to perform an infrared thermography inspection on the 60kV, 25kV, and 600V switchgear and cable connection points, as well as the 120/240V panel boards. Given the critical nature of the electrical infrastructure, this non-invasive scanning was done with all equipment running. A comprehensive report on the health of the electrical systems was issued to the client with detailed recommendations which included the repair plan for a faulty connection on a circuit breaker, a disconnected wire in a panel, collection of water/moisture in some junction boxes, and additional locations for thermal imaging view ports. Finally, it was confirmed that all other electrical systems were operating at nominal temperature conditions. This quick and inexpensive non-contact tool is very effective as part of routine maintenance to maximize the reliability and lifespan of electrical equipment.





Electrical Testing, Commissioning and Energy Management Specialists

QED specializes in the testing and commissioning of medium voltage, high voltage and protection systems. We are uniquely positioned to provide a comprehensive suite of energy management services.